

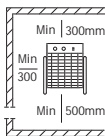
SAFETY

Warning signs on the product



WARNING!

The unit's air inlet and outlet must never be covered during operation.



Safe distances



Read the operator's manual carefully and make sure you understand the contents before using heater fan VF 21-31, VF 3-15, or VFBR 9.

The manufacturer guarantees that this product fulfils safety requirements in accordance with the relevant EU directives and standards.

EU Declaration of Conformity, see www.elbjorn.com.

Safety during use

- Do not cover the heater fan. Never remove guards, panels or cover plates during operation. Do not allow children under the age of 3 near the equipment unless they are constantly supervised.
- Children between the ages of 3 and 8 should only be allowed to turn the equipment on/off if it is installed in its normal position and they have been instructed how to use it safely and understand the risks. Children between the ages of 3 and 8 must not be allowed to plug in, adjust or carry out maintenance on the equipment.

- The product is not intended for use by persons (including children) with diminished responsibility, reduced physical or mental capacity, or lack of experience and knowledge, unless they have been shown the use of the product or instructed in its use by a person who is responsible for their safety.
- However, the product is suitable for use in situations where there are persons (including children) with reduced physical or mental capacity or diminished responsibility present.
- If children are in the proximity of the product, they must be informed that the product must not be used as a toy or a plaything.



WARNING Parts of this equipment can get very hot and could cause burns. Take special care when children or vulnerable people are present.

Safety during service/maintenance

Disconnect the heater fan from the electrical supply before servicing or maintenance.

Warning/note

Leave the heater fan switched off for a while before servicing so that it has time to cool down.

MINIMUM EXPERTISE REQUIRED

Any servicing and installation work must be performed by a qualified professional.

RISK ASSESSMENT

Do not position the heater fan so that the air inlet or outlet is blocked. Do not install directly underneath a fixed wall outlet. Do not use the heater fan near a bath, shower or pool.



NOTE! Do not cover the heater fan.

INTRODUCTION

DESCRIPTION

VF 21-31, VF 3-15 and VFBR 9 are all referred to in this section as the heater fan.

The section on safety must be read and understood by everyone who uses or repairs the heater fan. The instructions describe operation and maintenance measures that can be performed by the operator. More detailed service or troubleshooting must be performed by the manufacturer's service personnel. The instructions describe all necessary safety features and must be read and understood by the user before connecting the heater fan to the electrical supply. In other words, the first thing the user should do after delivery is to read the user instructions. Symbols and warning signs that appear in these instructions and on the heater fan are shown under SAFETY.

If any of the warning signs on the heater fan have become damaged or worn, new signs must be ordered as quickly as possible in order to ensure the greatest possible safety when using the heater fan.

The heater fan may only be used for the purposes described in these instructions.

The manufacturer reserves the right to make changes.

Heater fans in the VF series are intended for temporary or permanent heating. The housing is made of galvanised steel finished with epoxy paint. An axial universal motor blows air through the fan housing. The stainless steel tubular element is cooled by the air flow from the fan. The inlet and outlet are protected by finger guards. The temperature is controlled by an internal switch and thermostat.

APPLICATION AREA

The heater fan is intended for temporary or permanent heating. Heater fans can be used on building sites, in warehouses, workshops, stores, summer cottages, shops, car washes and similar dry and wet areas. Model VFBR 9 is approved for use in flammable areas, such as textile and wood processing industries, barns and large vehicle washes.

TECHNICAL DATA

Protection rating VF series IP44
 Protection rating VFBR 9 IP55



For other technical data, see www.elbjorn.com.
EU Declaration of Conformity, see www.elbjorn.com.

INSTALLATION

Electrical Installation

- VF 21 and VF 31 are supplied with a 1.9 m cable and plug.
- VF 3-6-9 and VFBR 9 are supplied with a 1.9 m cable and CEE 16A/400V connector.
- VF 7 and VF 12 (440V) are supplied with a 1.9 m pre-stripped cable.
- VF 12 and VF 15 are supplied with a 1.9 m cable and CEE 32A/400V connector.
- VF 9 (500V) is supplied with a 1.9 m cable and CEE 16A/500V connector.
- VF 15 (500V) is supplied with a 1.9 m cable and CEE 32A/500V connector.
- VF 3-6-9B is supplied with a CEE 16A/400V inlet.

NOTE! VF 31 must be connected to wall outlet that is fused for at least 13A.

Wall outlets and other electrical equipment must be installed by qualified electricians.

If the power cord is damaged it may only be replaced by the manufacturer or suitably qualified person.



NOTE! Any outlet that supplies the heater fan must be protected by a residual current device (RCD).

Inspection before operation

Check that the heater fan is connected to an electrical outlet with a residual current device.



NOTE! Do not cover the heater fan.

Installation/Assembly

Does not apply to heater fans with the additional letter B in the type designation.

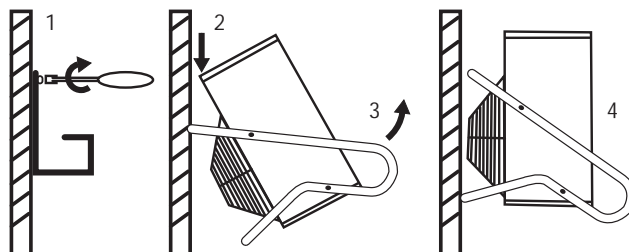
When mounting on a wall we recommend use of the UKVF mounting bracket. This bracket is supplied.

Screw this to the wall at a suitable height. Then hook the heater fan securely to the bracket and connect the plug to a wall outlet.

NOTE It is important that this outlet is protected by a residual current device.

Do not mount the fan in a location where the inlet or outlet could be blocked. Do not cover or mount directly underneath a fixed wall outlet.

The plug must be accessible after installation.



OPERATION

HANDLING DURING NORMAL OPERATION

Temperature range: min. +5°C – max. +35°C

VF 21 and VF 31: Start the fan heater by setting the power selector and thermostat (+5°C – +35°C) to the desired settings. The thermostat controls both the fan motor and heater.

VF3-6-7-9-12 and 15: Start the fan heater by setting the power selector and thermostat (+5°C – +35°C) to the desired settings. Use the power selector to choose whether the fan motor will be controlled by the thermostat, or run continuously (the fan then runs as long as the heater fan is powered on).

- °C ☒ = Thermostat controls heater and fan motor.
- ☒ = Thermostat controls heater. Fan motor runs continuously.

VF 3B-6B-9B and VFBR 9: Start the fan heater by setting the power selector and thermostat (+5°C – +35°C) to the desired settings. The thermostat only controls the heater. Fan motor runs continuously.

COOLING DOWN

VF 3-6-7-9-12 and 15: The heater fan has a cooling down mode that ventilates the residual heat from the element if necessary. The fan can continue to run even when the thermostat has cut out or the power selector is set to 0. Cooling down mode is activated if the fan housing is above +50°C.

Power selector

- 0 = off.
- ☒ = full fan.
- ☒◐ = full fan + half power.
- ☒◑ = full fan + full power.

Timer function

Only applies to heater fans with the additional letter 'T' in the type designation.

The timer is set by default to give a delayed start.

Max. 14 hours. The timer should be turned to maximum and then back to the selected time.

Overheating protector

VF 21 and VF 31: The overheating protector is automatically reset about 5 minutes after the heater fan has been unplugged and left to cool down.

VF 3-6-7-9-12 and 15: The overheating protector can be reset manually by pressing a small screwdriver or the like into the hole marked RESET on the control panel.

No-voltage release switch

VFBR 9: The heater fan is fitted with a no-voltage release switch that is tripped in the event of a power cut or overheating. The fan must always be restarted with the green start button.

If the overheating protector is triggered

- Disconnect the power.
- Check the operation of the fan and make sure that the fan motor is not locked.
- Reset the overheating protector and try the fan again.
- If the fault is still present or the problem recurs, consult a qualified electrician.

SERVICE**MAINTENANCE**

Keep the fan free from dust and dirt. Blow clean with compressed air if necessary. Clean the exterior with a mild soap solution.

Check the operation of the fan heater and visually inspect connectors and cables. If the heater fan has been unused for a long time, blow it clean before use.

TROUBLESHOOTING/CHECK LIST**The heater fan only blows cold air:**

The fan motor switch is set to continuous operation.

Cooling down mode has been activated. Wait a while to see if the fan stops blowing.

The heater does not operate at full power:

Check that none of the fuses has blown.

The heater fan does not run:

Check that the main switch is on.

Check the residual current device.

Check that the fuses are OK.

Check that the thermostat is correctly adjusted.

Check that the overheating protector has not tripped.

If the fault is still present or the problem recurs, consult a qualified electrician.

NOTE! During the warranty period, always contact the distributor before performing a repair.

Storage

When the heater fan is not in use it must be stored in dry, weatherproof premises.

SCRAPPING

Take the heater fan to a recycling station according to state or local regulations. In Sweden, the heater fan is covered by the El-Kretsen collection and recycling rules.

In countries outside Sweden the heater fan must be recycled in accordance with the relevant national regulations.

WARRANTY

El-Björn AB's products and deliveries are regulated by Standard Agreement NL09. Under these provisions, El-Björn AB is responsible for faults arising within one year after delivery.

The provisions of NL 09 also apply for professional parties who register according to the instructions below, although with the following modification:

El-Björn AB is liable for faults arising within three years after delivery (only applicable to products registered on El-Björn's website.

In other respects, the provisions of NL 09 apply).

To obtain this extended warranty, you must register within 14 days after purchasing the products.